

PLAT NO. 2
HYPOLUXO VILLAGE

IN SECTION 6, T. 45 S., R. 43 E PALM BEACH COUNTY, FLORIDA

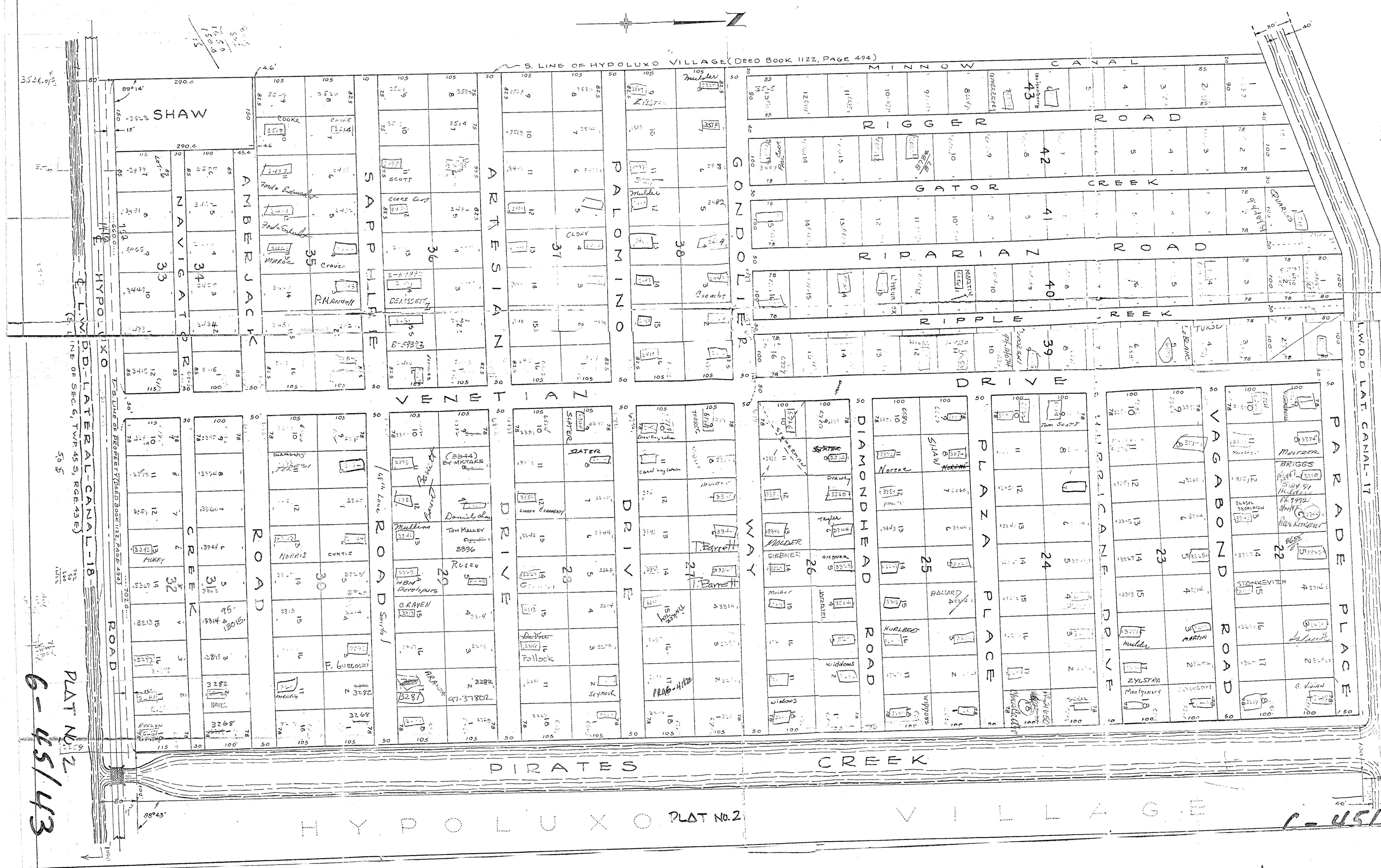
SCALE: 1"=100'

H. C. FUGATE, SURVEYOR

AUGUST, 1957

READING FILE
PALM BEACH CO.
ENGINEERING, ZONING & BUILDING
P. O. BOX 1948
WEST PALM BEACH, FLOR.

6-45/43



PLAT No. 2
6-45/43

ur0318.jgr
HYPOLUXO VILLAGE PLAT 2

210